

SCULPT INSTRUCTION MANUAL



SCULPT

Trim, Cut, Clip.
Hair Clippers



WARNINGS

1. Please abide by the safety instructions manual. Violations may lead to short circuit, fire, electric shock and other serious injury.
2. When charging is completed, unplug the charging cord and store in a dry, safe place.
3. Use only the charging components provided with your Sculpt clipper. Replacement parts can be purchased at www.shoppopsonic.com.
4. After using your Sculpt clipper, clean it thoroughly by brushing off hair. For a deeper clean, remove the blade head and rinse as instructed in Cleaning and Maintenance. To avoid discoloration, do not use diluent, Benzene or alcohol on clipper.
5. This product is intended for human hair. If damage occurs while using it in any other way, the warranty may be voided by manufacturer.
6. If you notice the blades are pulling on the hair instead of cutting, turn off the device and make sure the blade head is attached securely. If problem persists, replace blade head.
7. While using your clipper, it is normal if the device gets warm to the touch.
8. Check whether the blade is damaged or deformed before use.
9. Do not disassemble or refit the hair clipper or power adapter. If it does not work properly, submit the clipper to a dealer authorized maintenance center for inspection or repair.
10. Persons with physical disabilities, mental disorders and lack of relevant knowledge, including children, must be under the supervision and guidance of guardians in order to avoid danger.
11. In order to ensure the normal operation of the clipper, please charge it in the environment of 5-35 degrees Celsius. Do not expose the hair clipper to direct sunlight or heat.
12. Before connecting to the hair clipper, make sure that the voltage marked on the hair clipper is line with the local power supply voltage.

Lithium Battery Replacement and Discard

Do not attempt to remove lithium ion battery. These types of batteries carry inherent dangers if mishandled and can explode, catch fire, or cause burns if disassembled or are damaged.

Lithium batteries are subject to local disposal regulations and should not be discarded in regular trash. Check your local laws and regulations for disposal information.

Lithium batteries can be recycled. For recycling information, contact your local recycling service or visit online recycling resources such as www.batteryrecycling.com or www.rbr.com.

Warranty

Pop Sonic warrants the Sculpt for a period of 1 year after the original date of purchase against defects due to faulty workmanship or materials. For warranty claims, you must register your device and log in to your account at www.shoppopsonic.com, then select the option to make a warranty claim. Our customer service department will contact you to initiate the warranty procedure.

This warranty covers working parts. It does not cover damage due to normal usage or accidents such as dropping the device.

Other exclusions include misuse or neglect to the device. This warranty is void if any other charging cables besides the one you received is used with your device.

For any warranty claims, proof of purchase must be provided. For this reason, please keep your receipt for the duration of the warranty period.

Shipping costs are non-refundable.

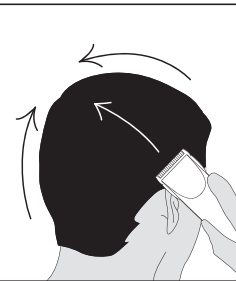
SCULPT



What's Included

1. Titanium ceramic blade
2. Height adjustment control dial
3. ON/OFF switch
4. LED charging indicator
5. Comb attachments
6. Cleaning brush
7. Lubricating oil
8. USB cord

Using your Clippers



1. Push up the power switch to power on.
2. Push the clipper in straight lines to avoid over-trimming. Move from the outside of the hairline inward.
3. Push down the power switch to power off.

4. When using the comb attachments, make sure they are properly aligned and snap on securely. There are grooves in the sides of the attachment that fit over small protrusions on the blade head.

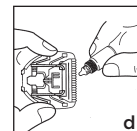
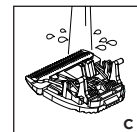
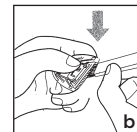
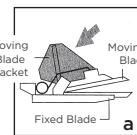
Note: For the best performance, we recommend cleaning your hair clipper frequently. Cleaning instructions are included in this booklet.

For questions about your product, please call Pop Sonic customer services at (800)772-9174 or email help@shoppopsonic.com

**Made by Pop Sonic
Minneapolis, MN 55344 USA**

MADE IN CHINA

Cleaning & Maintenance



1. Power off your hair clipper
2. Hold the blade part of the cutting attachment and pull it outward in the direction of the arrow shown in figure (a) to remove it. *Note: Before removing the blade cutting attachment, set the trimmer cutting length to 2 mm.*
3. Remove hair from the head of the machine and cutter head (b), then flush the cutter head assembly directly with clean water (c).
4. Dry the blade assembly with a cloth.
5. Apply a few drops of oil to the blade. (d)
6. Reassemble your hair clipper. (e)

Warning: Take caution when cleaning or changing the cutting attachment as the teeth are sharp and could cause an injury