

LED MAKEUP MIRROR

For your safety and continued enjoyment of this product please read the instruction carefully before using.

Safety Instructions

Made in China

- ① Always keep away from water.
- ① Do not place or store appliance where it can fall or be pulled into a tub or sink. If the appliance falls into water, DO NOT REACH INTO THE WATER.
- ① Do not use while bathing or in the shower.
- ① Close supervision is necessary when any appliance is used by or near children or people with a physical/mental disability.
- ① Do not operate this appliance if the appliance malfunctions or has been damaged in any manner. No repairs should be attempted by the consumer.
- ① Use appliance only for intended use as described in this instruction-book.
- ① Be sure mirror is not in a position where it can reflect sunlight.

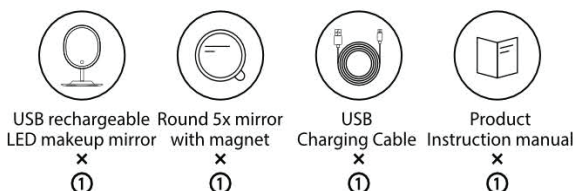
Instructions for using the USB rechargeable LED light-up makeup mirror

- ① The face shape mirror is designed for use when doing makeup
- ② The mirror with LED lighting, is designed to help light up your face when doing makeup.
- ③ The front mirror is high definition 1x regular mirror.
- ④ There is one small 5x magnification mirror magnet near the back-side of the larger mirror.
- ⑤ You can detach the 5x mirror for more detail oriented tasks.
- ⑥ The 5x mirror is magnetized to attached to the larger mirror on the front side for hands-free tasks.
- ⑦ The mirror is powered by a rechargeable 1000mAh Li-polymer battery.
Please charge this mirror with the proper USB cable and charger.
Make sure all functions are turned off when the product is not used for some time.

Special Features

- 😊 Smart 1:1 face mirror
- 💡 This light-up makeup mirror uses Lifetime Energy Saving LED bulbs. Replacement bulbs are not required.
- 🔍 A detachable 5x magnifying mirror to see the finer details
- 🗑️ The base has a storage function to save space and keep your dresser clean and tidy.
- 🔄 Mirror rotation, axial design for greater than 90 degree rotation.

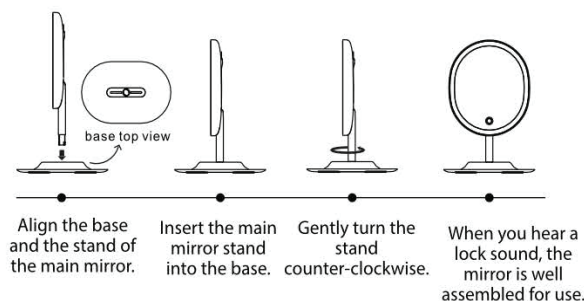
What's in the box



How to charge the mirror

- ① Connect the micro USB port with a 5V power supply or computer by the provided USB cable.
- ② When we start charging, the indicator will light up. When the mirror is charged fully, the indicator will turn off automatically.
- ③ Before charging the mirror, please make sure that the switch is in the OFF position.

How to Assemble



Operating Instructions

